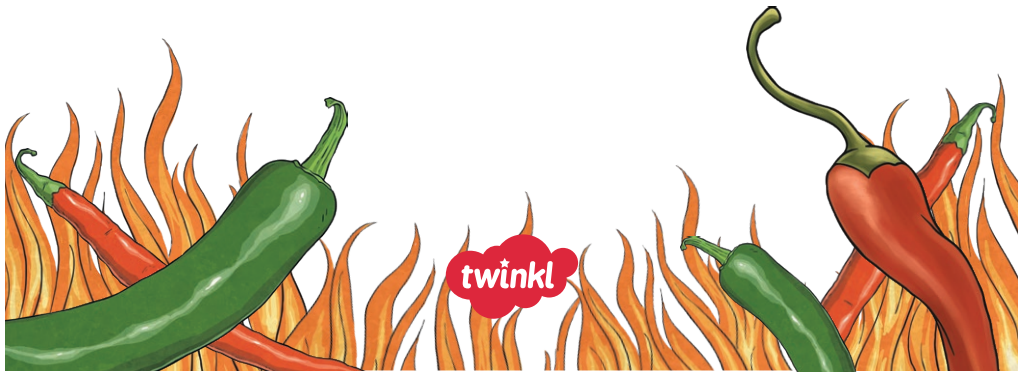


Chilli Challenge

Measurement



Measurement

Nice and Spicy!



Measures

Measure, compare, add and subtract: lengths (m/cm); mass (kg/g); volume/capacity (l/ml).



Alana
1m 27cm



Kris
1m 23cm

Who is the tallest? What is Alana's height in centimetres?

twinkl.com

Measurement

Nice and Spicy!



Measures

Measure, compare, add and subtract: lengths (m/cm); mass (kg/g); volume/capacity (l/ml).



13kg

The weight limit for the suitcase is 12kg. What weight needs to be taken out?

twinkl.com

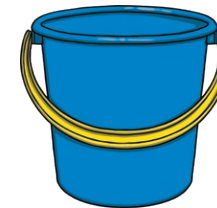
Measurement

Nice and Spicy!



Measures

Measure, compare, add and subtract: lengths (m/cm); mass (kg/g); volume/capacity (l/ml).



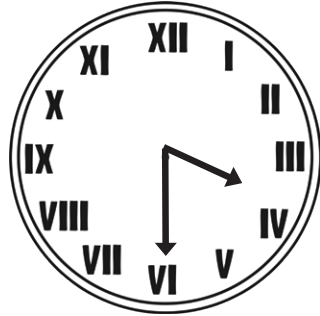
The bucket is filled by pouring five jugs of water. How much water does the bucket hold?

twinkl.com

Time

Tell and write the time from an analogue clock, including using Roman numerals from one to twelve, and twelve-hour.

Write the time in words.



Time

Estimate and read time with increasing accuracy to the nearest 5 minutes; record and compare time in terms of seconds, minutes and hours; use vocabulary such as o'clock, a.m./p.m., morning, afternoon, noon and midnight.

Estimate how long it takes to run around your playground. Use a stopwatch to record the time to the nearest second.

How would you write the time if it was 10 o'clock in the morning?

Write the time to show it is midnight.

Time

Know the number of seconds in a minute.

There are 60 seconds in a minute.

How many seconds are there in 4 minutes?

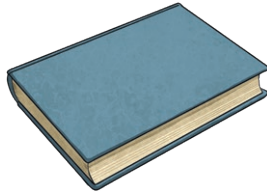
Time

Compare durations of events (for example to calculate the time taken by particular events or tasks).

Each Maths lesson is 55 minutes. Each English lesson is 1 hour and 5 minutes. Which is longer?

Money

Add and subtract amounts of money to give change, using both £ and p in practical contexts.

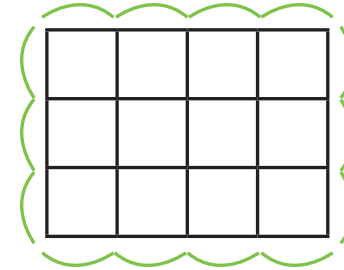


80p

What is the change from £1?

Shape

Measure the perimeter of simple 2D shapes.



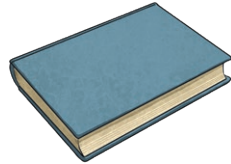
What is the perimeter of this shape?

Money

Add and subtract amounts of money to give change, using both £ and p in practical contexts.



80p

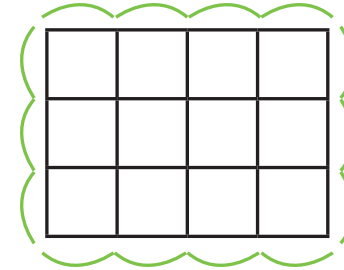


90p

What is the change from £2?

Shape

Measure the perimeter of simple 2D shapes.

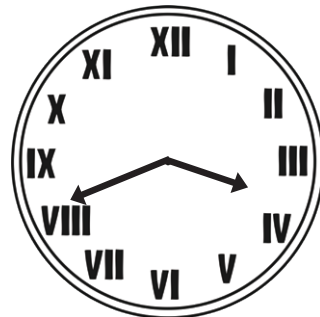


What is the perimeter of this shape?

Time

Tell and write the time from an analogue clock, including using Roman numerals from I to XII, and 12-hour and 24-hour clocks.

Do the clocks show the same time?



Time

Estimate and read time with increasing accuracy to the nearest minute; record and compare time in terms of seconds, minutes and hours; use vocabulary such as o'clock, a.m./p.m., morning, afternoon, noon and midnight.

Estimate how long it takes to run around your playground. Use a stopwatch to record the time to the nearest second.

How would you show the time was 10 o'clock in the morning?

Write the time to show it is midnight.

Time

Measure, compare, add and subtract: lengths (m/cm); mass (kg/g); volume/capacity (l/ml).

Know the number of seconds in a minute and the number of days in each month, year and leap year.

There are 60 seconds in a minute.

How many seconds in 4 and a half minutes?

January, March, May, July, August, October and December have 31 days. April, June, September and November have 30 days. February has 28 days and 29 in a leap year.

Time

Measure, compare, add and subtract: lengths (m/cm); mass (kg/g); volume/capacity (l/ml).

Compare durations of events (for example to calculate the time taken by particular events or tasks).

Each Maths lesson is 55 minutes. Each English lesson is 1 hour and 5 minutes. Which is longer?

30 Days	31 Days	Other

Complete this table

Measures

Measure, compare, add and subtract: lengths (m/cm); mass (kg/g); volume/capacity (l/ml).



Alana
1m 27cm



Kris
1m 23cm

Who is the tallest? What is the difference in height?

Measures

Measure, compare, add and subtract: lengths (m/cm); mass (kg/g); volume/capacity (l/ml).

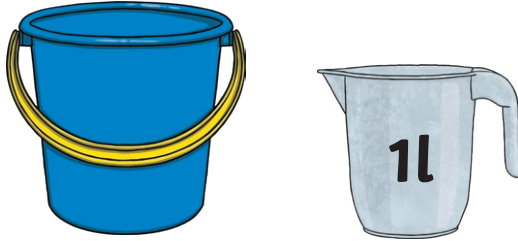


13kg 400g

The weight limit for the suitcase is 12kg. What weight needs to be taken out?

Measures

Measure, compare, add and subtract: lengths (m/cm); mass (kg/g); volume/capacity (l/ml).



The bucket holds five times more water than the jug.
How much water does the bucket hold?



Money

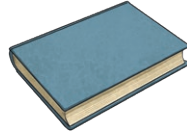
Add and subtract amounts of money to give change, using both £ and p in practical contexts.



50p



80p



90p

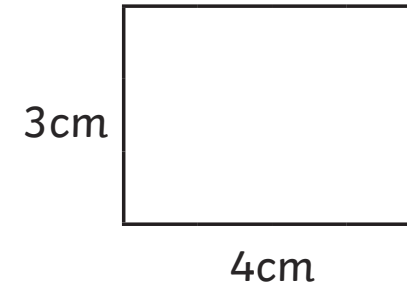
What is the change from £5?

Which coins could be used?



Shape

Measure the perimeter of simple 2D shapes.



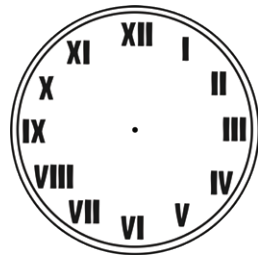
Calculate the perimeter of this rectangle.



Time

Tell and write the time from an analogue clock, including using Roman numerals from I to XII, and 12-hour and 24-hour clocks.

Add a time to the analogue clock. The digital clocks must show the same time as the analogue clock. One is a 12-hour digital clock with a.m. or p.m. and the other is a 24-hour clock. Add the digital times as if the time is in the afternoon.



Time

Estimate and read time with increasing accuracy to the nearest minute; record and compare time in terms of seconds, minutes and hours; use vocabulary such as o'clock, a.m./p.m., morning, afternoon, noon and midnight.

Estimate how long it takes to run around your playground. Use a stopwatch to record the time to the nearest second. Order the results from fastest to slowest.

How many hours from 10 a.m. to midnight?

Time

Know the number of seconds in a minute and the number of days in each month, year and leap year.

How many seconds are in 4 minutes?

What date is a week after 28th January?

Time

Compare durations of events (for example to calculate the time taken by particular events or tasks).

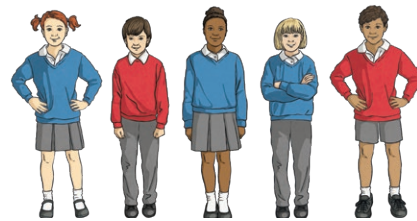
Calculate the duration of each subject's lessons during the week and compare these. (If there are five maths lessons of 55 minutes, the total is four hours and 35 minutes.)

Measures

Measure, compare, add and subtract: lengths (m/cm); mass (kg/g); volume/capacity (l/ml).

Add 1m26cm and 1m 32cm to two of the children.

Bobby is 3cm shorter than the tallest person in the line. How tall is Bobby? Write the heights in order smallest to largest.



Measures

Measure, compare, add and subtract: lengths (m/cm); mass (kg/g); volume/capacity (l/ml).



13kg 400g

The weight limit for the suitcase is 12kg. What weight needs to be taken out?

Measures

Measure, compare, add and subtract: lengths (m/cm); mass (kg/g); volume/capacity (l/ml).



136g



74g



263g

What is the total weight of the objects?