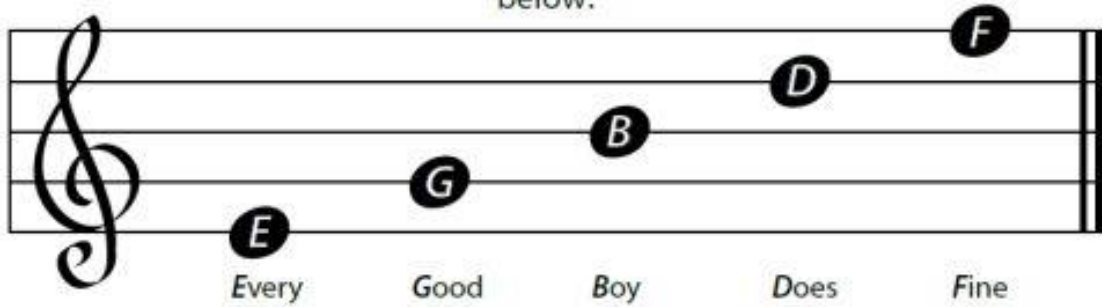
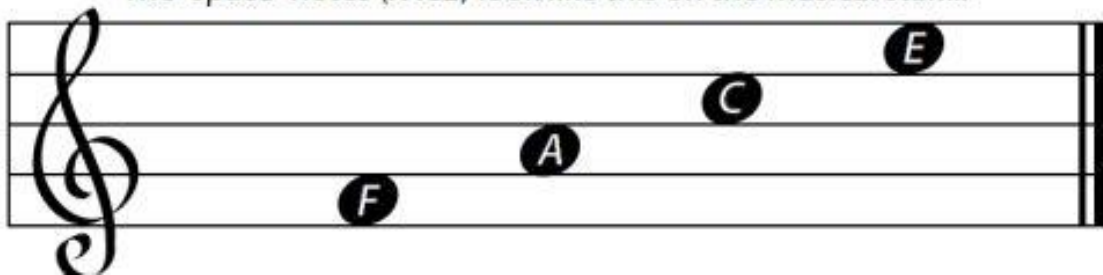



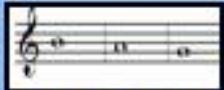
The "line" notes (*EGBDF*) appear on the musical staff as shown below:



The "space" notes (*FACE*) look like this on the musical staff...

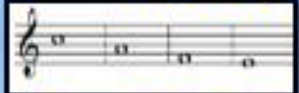
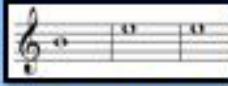


Can you fill in the gaps?
(Click for the answers)

My  took his  and went to a


D A D

B A G

 He got stung by a 

C A F E

B E E

and so he went home to 

B E D

How many words can you make using the letters A B C D E F G? (You can use a letter more than once)
Write them on a staff (5 lines - see next slide)