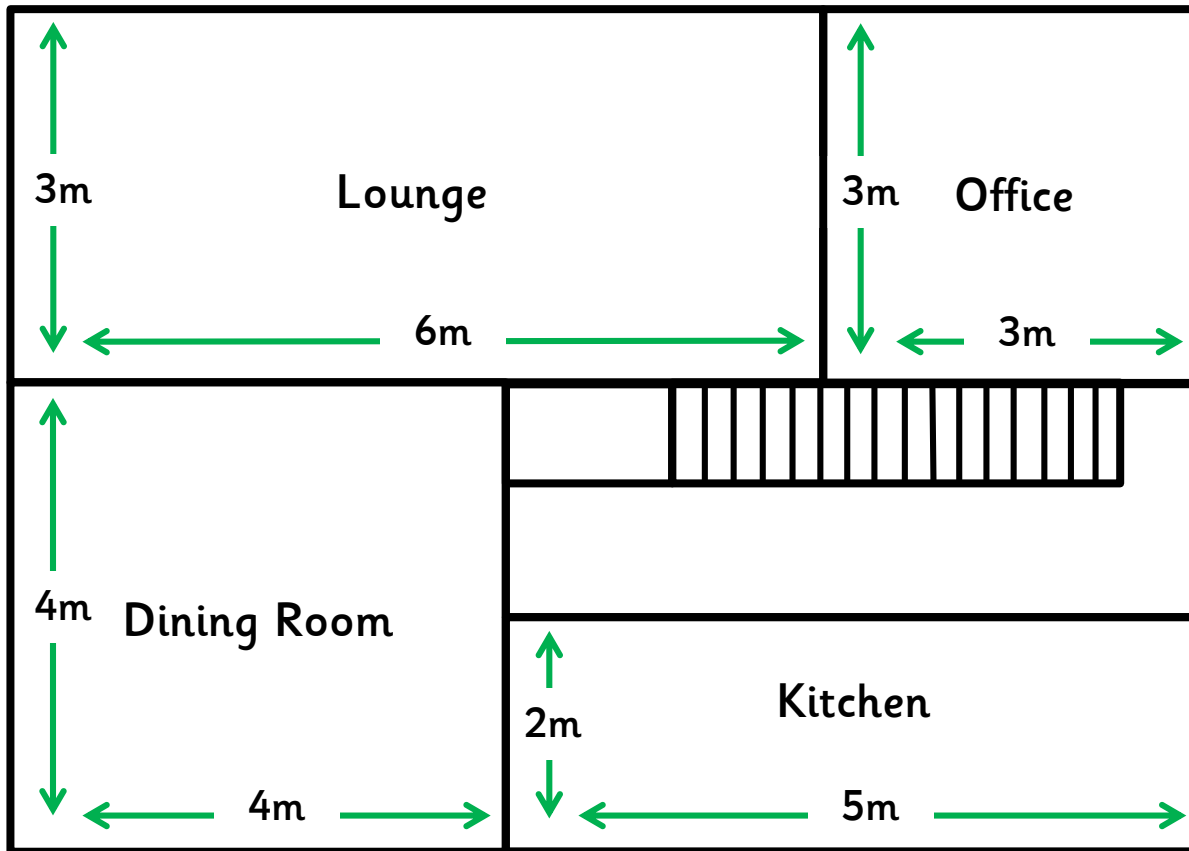
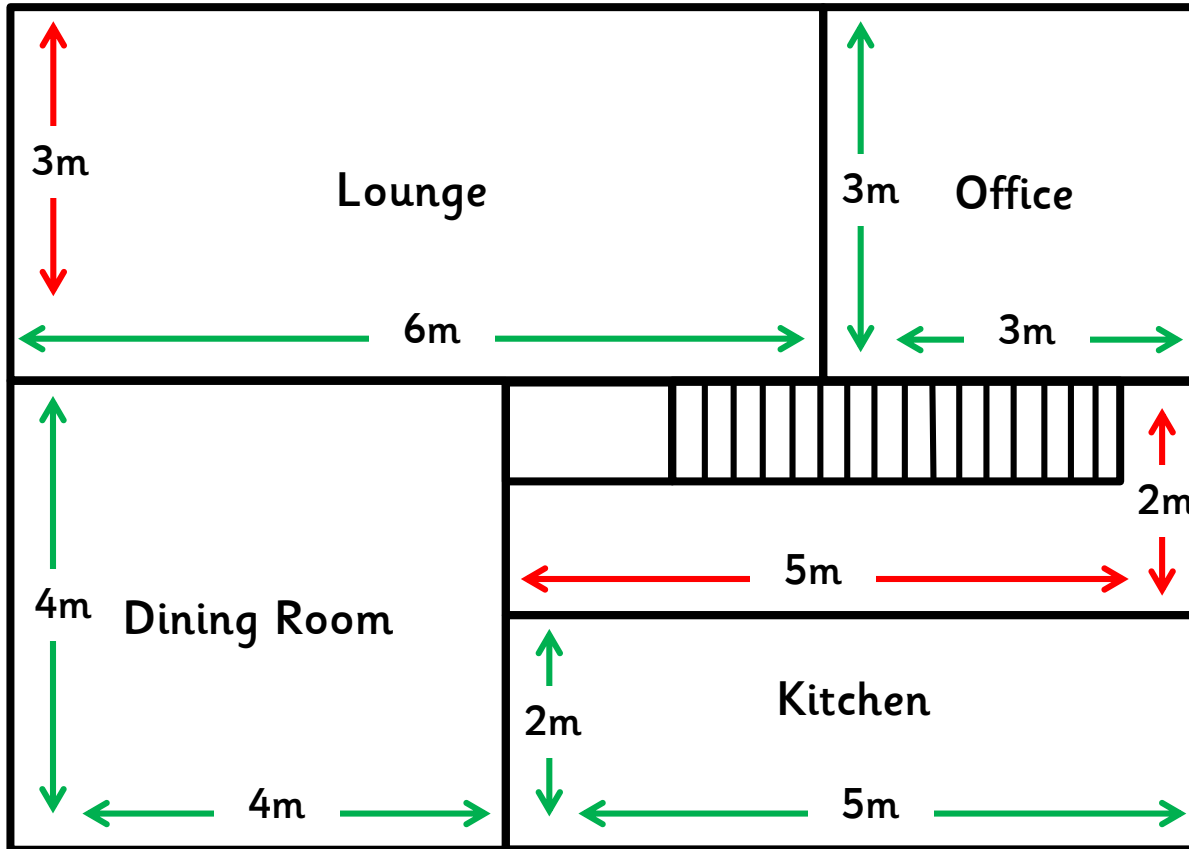


Floor Plan Area and Perimeter



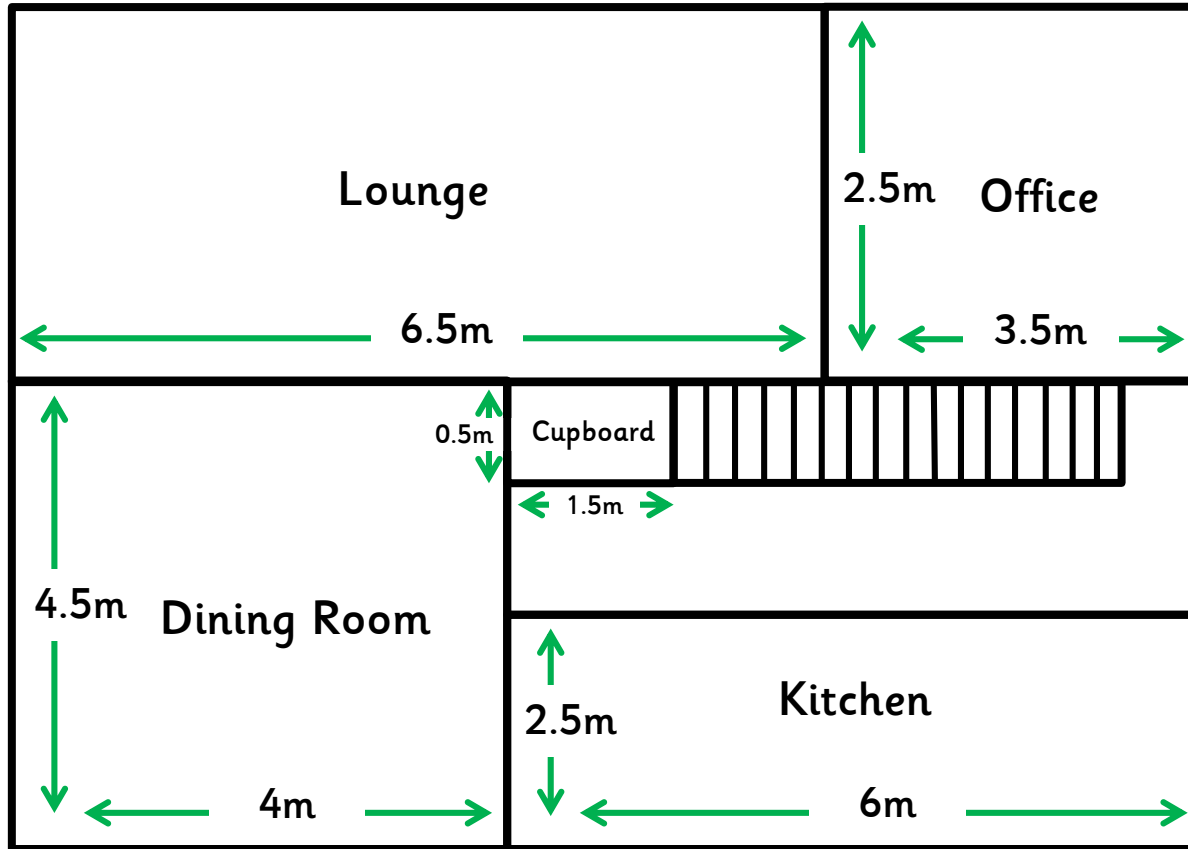
1. Jill needs to buy a new carpet for the dining room. Find the area of the dining room floor so that she knows how many square metres to buy. $16m^2$
2. Jill also needs to buy some new skirting board for the dining room. Calculate the perimeter of the room. $16m$
3. Jill's daughter, Emily, would like to string up her birthday cards all around the lounge. Calculate the perimeter of the lounge so she knows how much string she will need. $18m$
4. John wants to put a new desk in his office. It is one and a half metres in length. Will he have enough space to put the desk on the wall closest to the stairs?
Yes
5. John fitted a new laminate floor in the kitchen last year. How much floor did he lay? $10m^2$

Floor Plan Area and Perimeter



1. George is selling his house. He needs to know the length of the house and the width of the house. Calculate the length and width. **Length: 7m Width: 9m or vice versa**
2. What is the perimeter of the house? **32m**
3. George has agreed to put a new carpet in the lounge before the new buyers move in. How much carpet will he need? **18m²**
4. Jenny would like George to put a new wallpaper border in the dining room. How much will he need? **16m**
5. Jenny measures the width of the hallway, including the stairs. What does it measure? **2m**
6. George wants to teach his son Jamie about floor plans. Add the missing measurements to the lounge and hallway so that it is easier for Jamie to understand.

Floor Plan Area and Perimeter



1. Danyal wants to put a large picture in the lounge on the outside wall on the west side. Calculate the length of the lounge wall. **2.5m**

2. Sunita used to work from home. Recently, her home business started renting accommodation because she took on some new employees. Danyal would like to make the lounge bigger by knocking through to the office. Calculate the area and perimeter of the proposed new lounge. **$p = 25m$, $a = 25m^2$**

3. The dining room and the kitchen are connected by bi-folding doors. Sunita wants the same floor to continue throughout. She is not sure whether she should match the dining room floor to the kitchen floor or get a new floor throughout. Calculate both areas so that she can get a quote for both. **Dining Room AND Kitchen: $33m^2$; Dining Room only: $18m^2$**

4. Danyal has another idea. He wants to keep the kitchen floor half way across the kitchen (from the East wall to the middle) and carpet the other half of the kitchen. How much carpet will he need to order? **$7.5m^2$**

5. Hakeem's bedroom is exactly the same size as the office. He wants a new border in his bedroom. The green border costs £1.25 per square metre. The blue border costs £1.50 per metre. Danyal asks Hakeem to work out how much each border would cost before they make their decision. **Green border: £15; blue border: £18**