

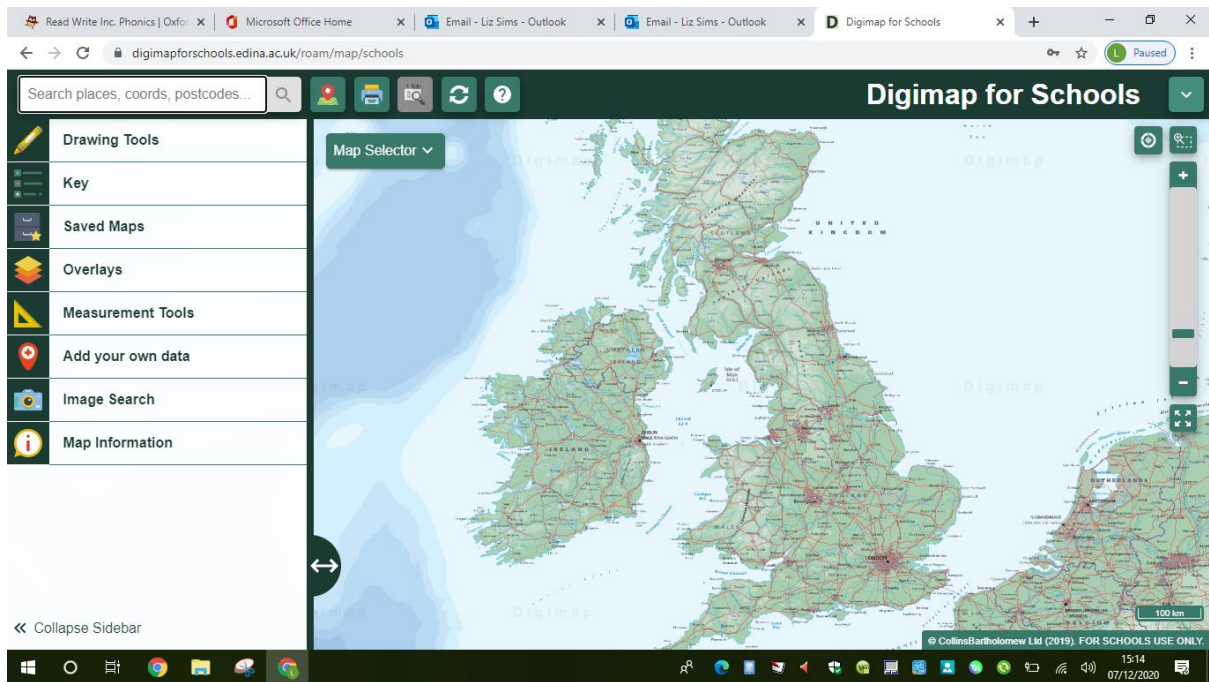
Digimaps for Schools

Login <https://digimapsforschools.edina.ac.uk/login>

Login details:

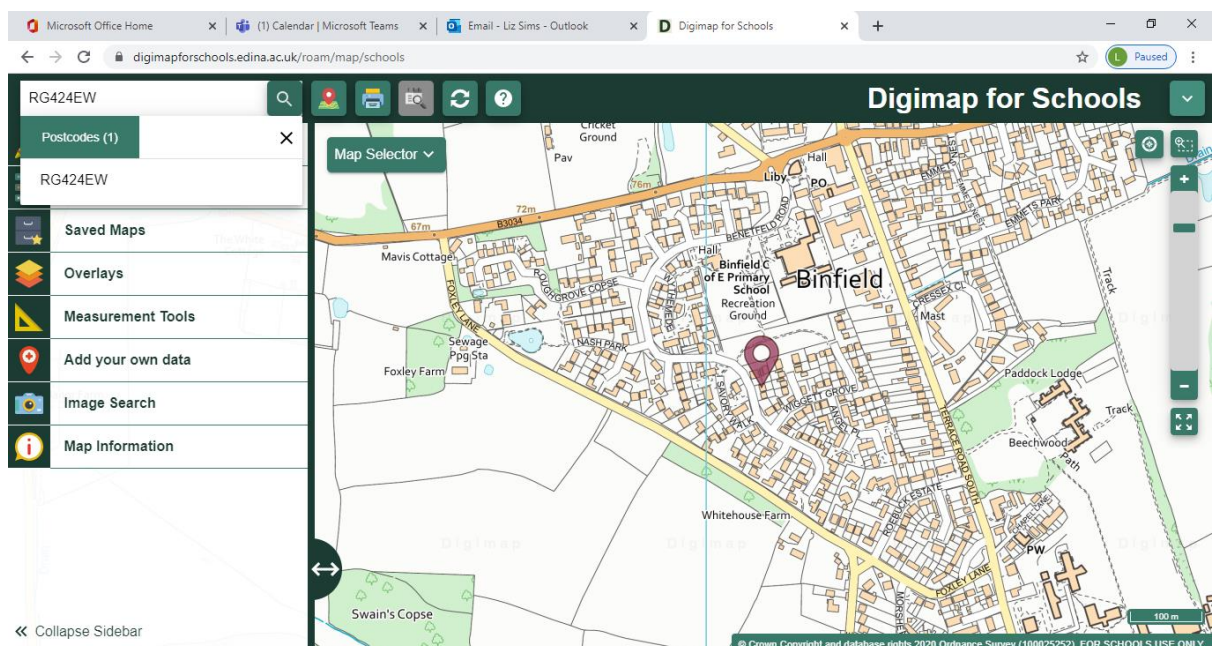
Username: RG42 4EW

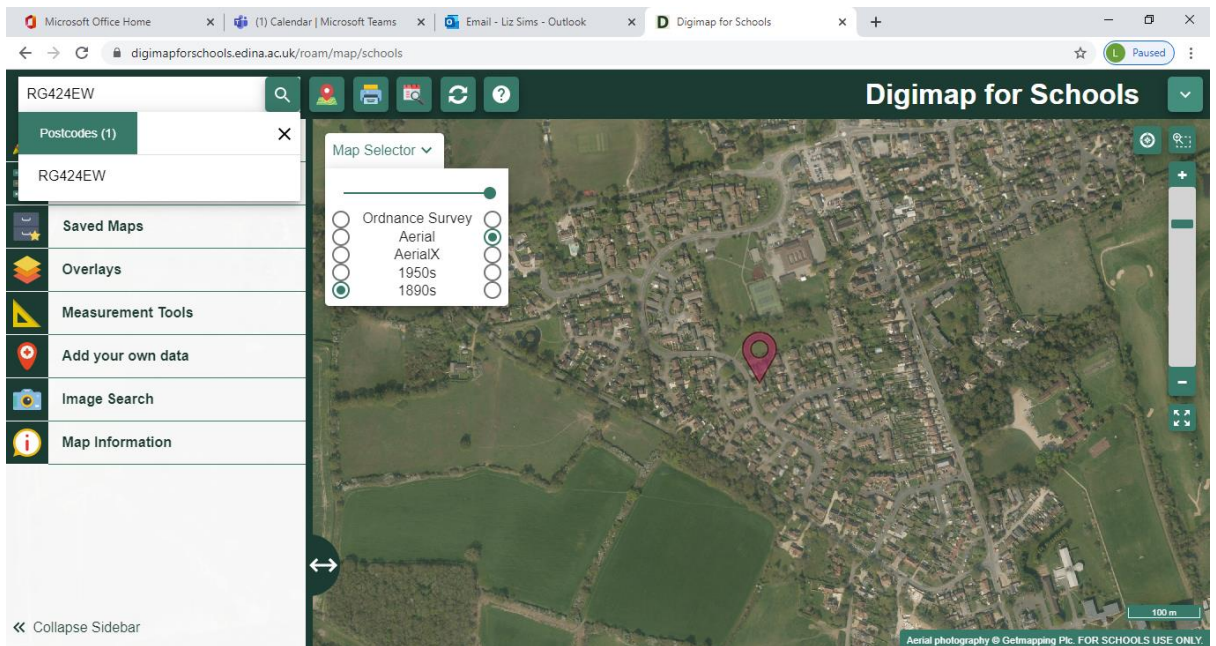
Password: choves5925



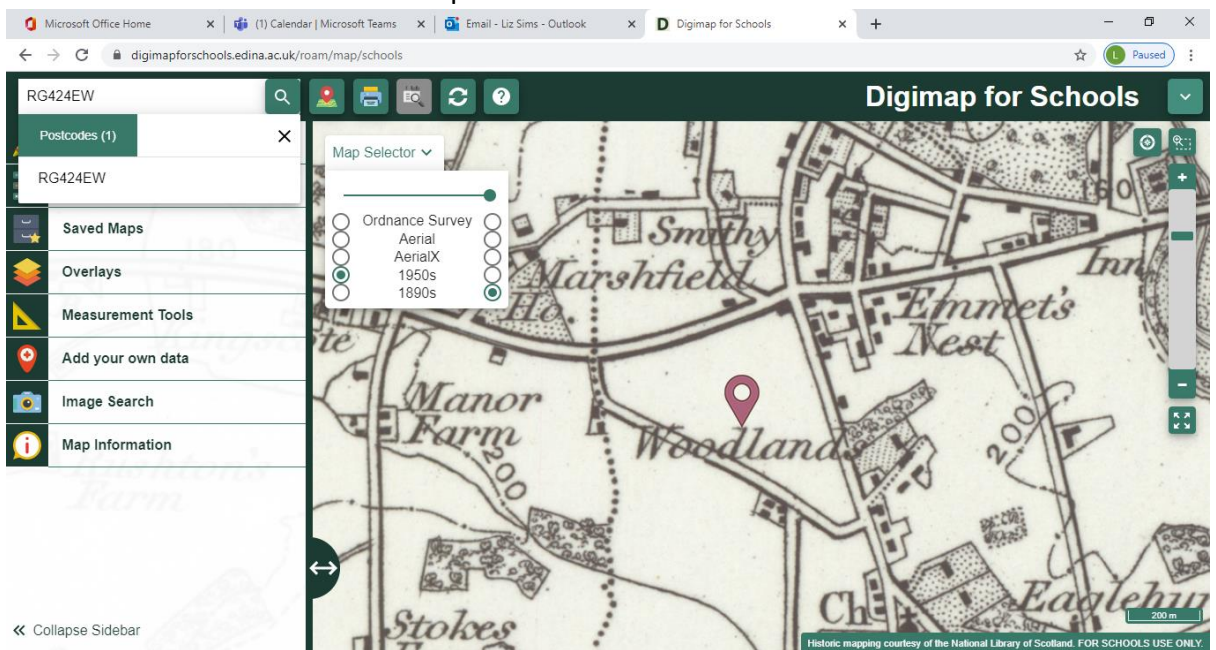
Have a go at doing the following tasks:

- Search for the school in the search tab.
- Try changing the map selector.

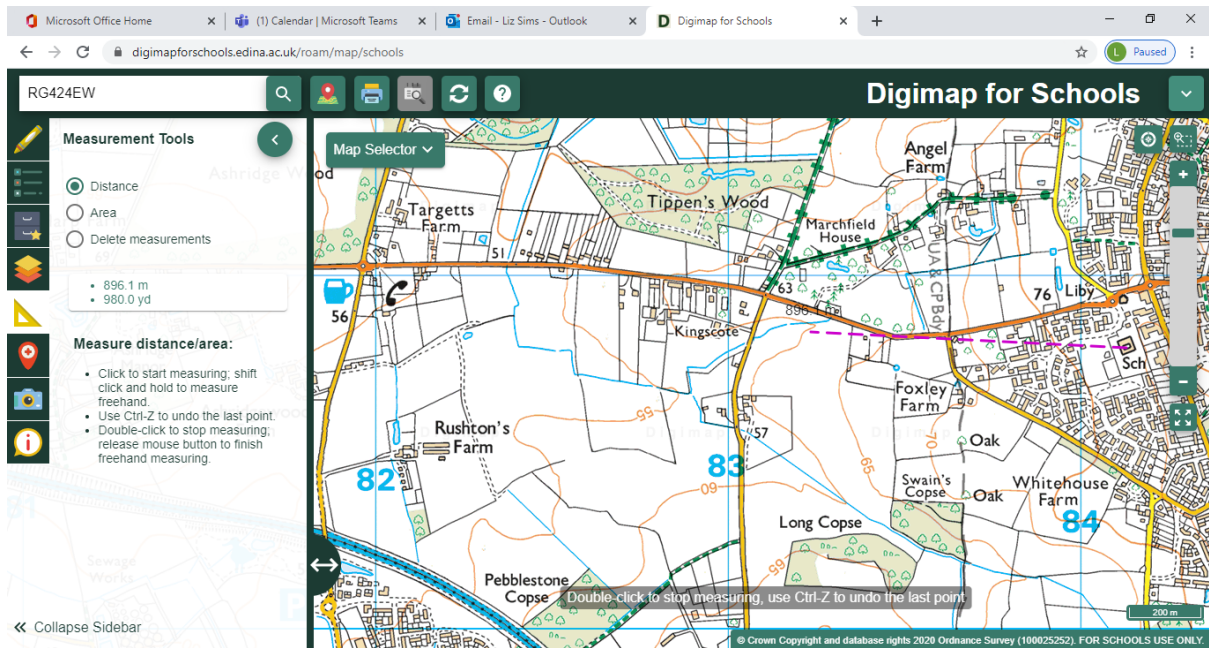




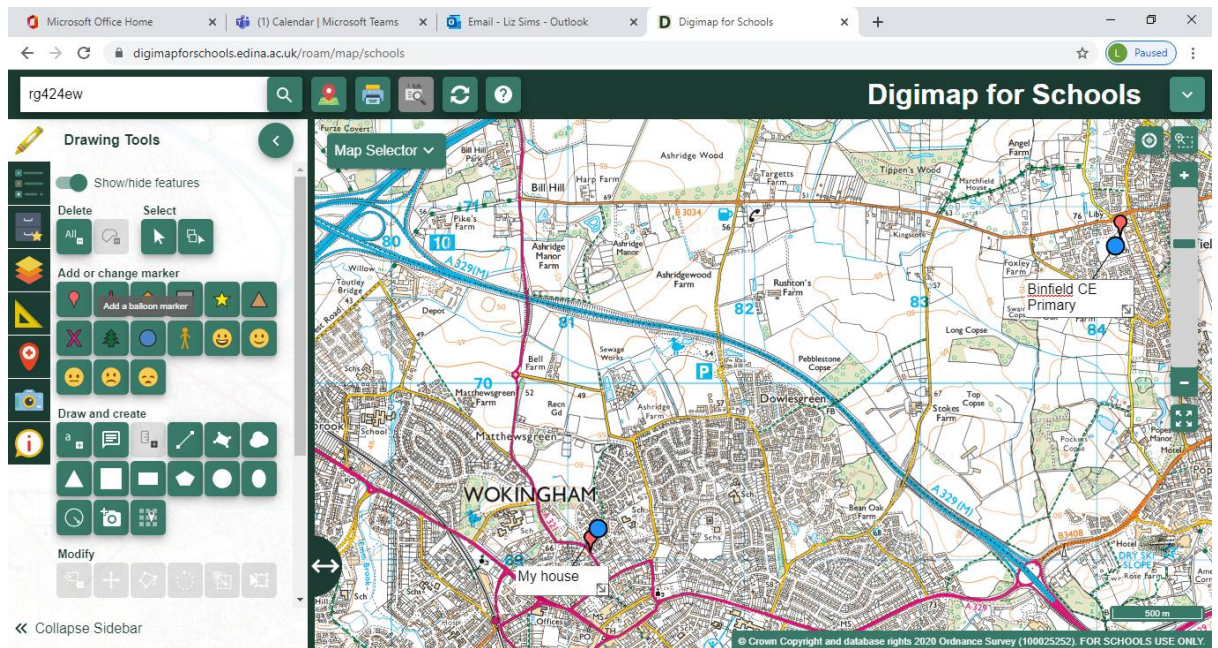
How was the area different in the past?



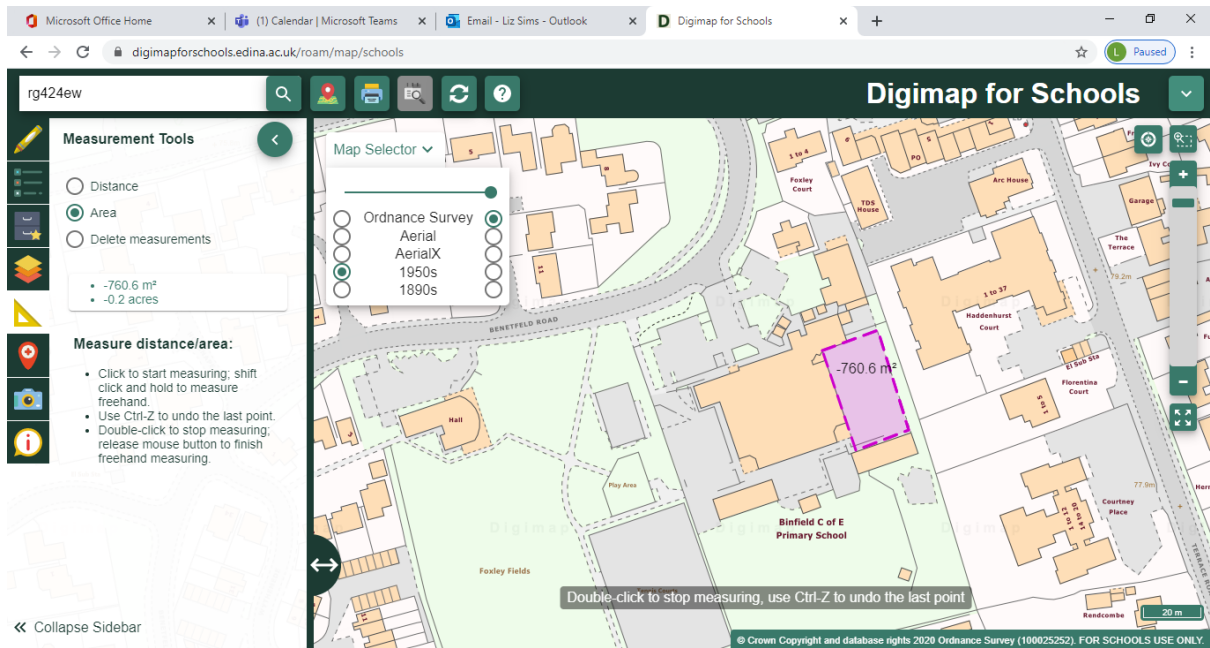
- How far is it from the school to The Warren? Are there different ways you could measure this?



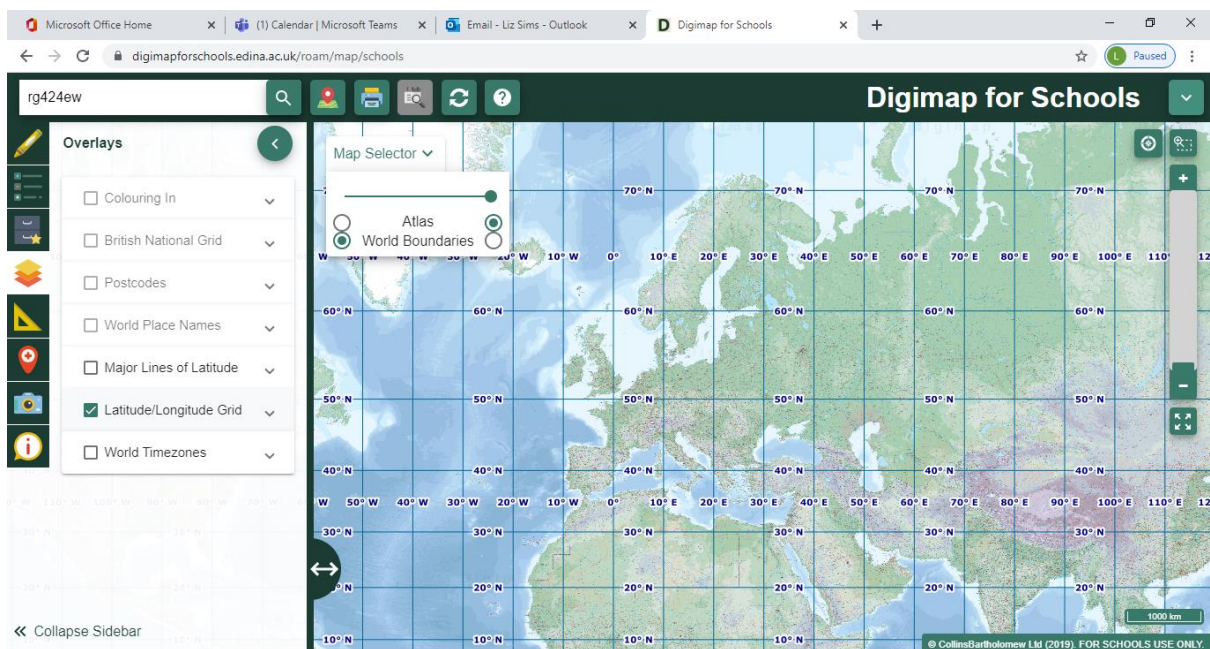
- Put a marker by your house and the school. Add a text box. How far is it between the points?



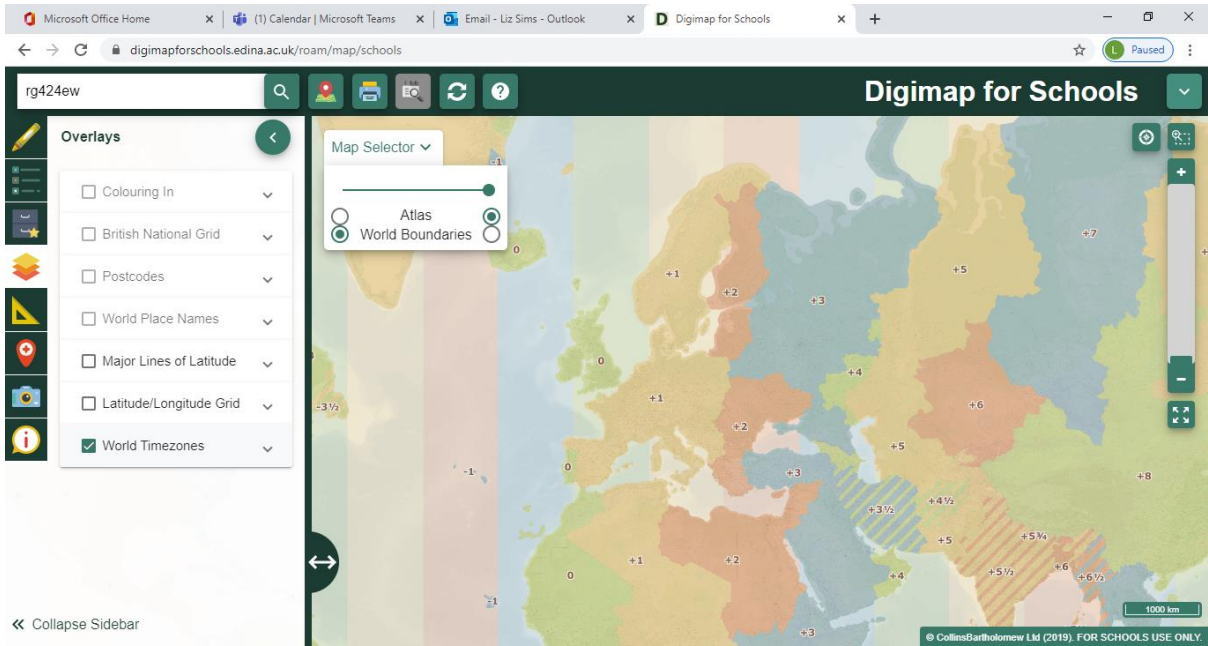
- Measure the area of the Junior Playground using the measurement tools. Is it bigger, or smaller than the Infant Playground?



- What is the distance between the Tropic of Cancer and the Tropic of Capricorn?



- What is the time difference between Binfield and Athens?



- What is the grid reference for the library? Click on coordinate capture in 'i' and click the on the map at the correct location.

