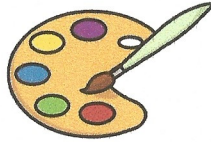


- 3 Class 1 were asked to choose their favourite colour out of yellow, green, blue and purple.

The pictogram shows the results.



Colour	
Yellow	
Green	
Blue	
Purple	

Key

= 1 child

a) How many children chose yellow?

12

b) How many children chose green?

1

c) How many more children chose purple than blue?

4

How did you work this out?

I counted on from 2 until I got to 6.

- 4 Eva's friends vote for their favourite fruit.

She draws a pictogram and says it shows:

- ✓ the same votes for apple and pear
- melon got the fewest votes
- ✓ plum got the most votes
- ✓ grape got only 1 vote
- grape got fewer votes than pear.

a) Draw a possible pictogram so that Eva's statements are true.

Grape	Melon	Apple	Plum	Pear

b) Draw a key for the pictogram.

