

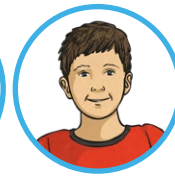
- 1) Three children record their answer to this problem.

The milk bottle holds 1900ml. I poured the same amount of milk into three cups and had 1675ml left in the bottle. How much milk is in each cup?

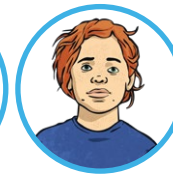
Which child has given the correct answer?
Explain how you know.



Jessica:
7.5l



Jacob:
0.075l



George:
0.75l



- 2) Which bar model best represents this problem? Solve the problem and explain your answer.

Five equally sized jars of jam and a 250g jar of pickles have a mass of 0.9kg altogether. Give the mass of one jar of jam.

