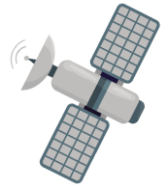


Percentages – Missing Values

1. Alan the Alien is thinking of a number.

He says,



40% of the whole is less than 60.

If you find 52% of the whole, it's greater than 40 but less than 100.

12.5% of the whole will result in an even number with no decimal places.

Using Alan's clues, explore the different possible numbers he could be thinking of.

Various answers, for example:

The whole could be 96. 40% of 96 = 38.4; 52% of 96 = 49.92; 12.5% of 96 = 12.

The whole could be 112. 40% of 112 = 44.8; 52% of 112 = 58.24; 12.5% of 112 = 14.

DP

2. Match the statements below to the wholes. Fill in the blank cards so that each card is paired up correctly.

Statements:

Card A

$$36\% = 540$$

Card B

$$37.5\% = 172.5$$

Card C

$$11\% = 178.2$$

Card D

$$12.5\% = 120.5$$

Card E

$$66\% = 561$$

Card F

$$58\% = 533.6$$

Wholes:

Card G

850

Card H

1,620

Card I

460

Card J

1,500

Card K

920

Card L

964

Investigate the different cards that can be paired together.

Various answers, for example: see above.

Card A, Card J; Card C, Card H; Card B, Card I; Card D, Card L; Card E, Card G; Card F, Card K.

DP